
 **17" - 32"**
 **1 - 9 kg**
**75x75
100x100**  **VESA®**

ICY BOX IB-MS523-T

Single Monitor Stand

Key features

- Space-saving – for a more flexible and productive workplace
- Sophisticated design – slim and ergonomic construction
- Smart Torque Adjust™ – can be adjusted to different monitor weights
- Comfortable height adjustment – thanks to gas pressure spring support
- Easy Cable™ Management – for organised and clear cable management
- Metal base with clamping device or table grommet guarantees high stability
- Can be mounted from the top of the desk surface
- Removable VESA® plate – enables easy installation
- Supports 75x75 and 100x100 VESA® standards
- Easy assembly and compact packaging – optimised for e-commerce



Packing content

IB-MS523-T, allen wrench, screw set, quick installation guide

Technical data

Model	IB-MS523-T	Swivel (Hinge) - VESA®	+90° to -90°
Article no.	61084	Tilt (Hinge) - VESA®	+90° to -45°
EAN code	4250078174172	Rotate (Pivot) - VESA®	+180° to -180°
Colour	Silver/grey	Base - Rotate (Pivot)	+180° to -180°
Material	Aluminium, steel, plastic	Tilt (arm)	+45° to -45°
Maximum size of monitor (diagonal)	32" (81 cm)	Swivel (Hinge)	+180° to -180°
Number of monitors	1	Max arm extend	550 mm
Max. weight of monitor	1 - 9 kg	Max arm height	495 mm
Mounting	Full metall base with clamping device or table grommet	Arm height adjustment range	280 mm
VESA® compatible	75x75 / 100x100 mm	Table thickness	10 - 50 mm (clamping device), 10 - 45 mm (table grommet)

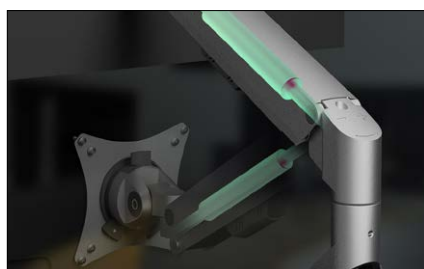


ICY BOX **IB-MS523-T** Single Monitor Stand



The Adaptable Monitor Arm

Catering to a diverse range of displays, this monitor arm comfortably supports screen sizes from 17" to 32", including curved monitors. With a weight capacity of 1-9 kg and VESA® compatibility (75x75, 100x100), it's designed to fit most monitors, enhancing your workspace with its versatile adaptability.



Advanced Gas Spring Technology

Customize your viewing comfort to fit your preferences, designed with a high-quality gas spring for smooth height adjustments. This feature lets you position your monitor at the desired height, creating a workspace that aligns with your unique needs for comfort and productivity.



Snap-and-Lock

The detachable VESA® adapter, crafted from premium steel, offers a practical solution for monitor mounting. After a simple unlocking, it can be lifted out, allowing you to attach it to your monitor first. Once done, it hooks smoothly into the support arm, ensuring a secure and stable connection.

Logistical data

Packing unit: 6 pcs. / carton
Total weight: 17.84 kg
Gross weight (with packing): 2.84 kg
Net weight: 2.12 kg

Dimension/carton: 450x420x350 mm
Dimension (with packing): 200x433x110 mm
Dimension of article: 200x430x105 mm
Country of origin: China